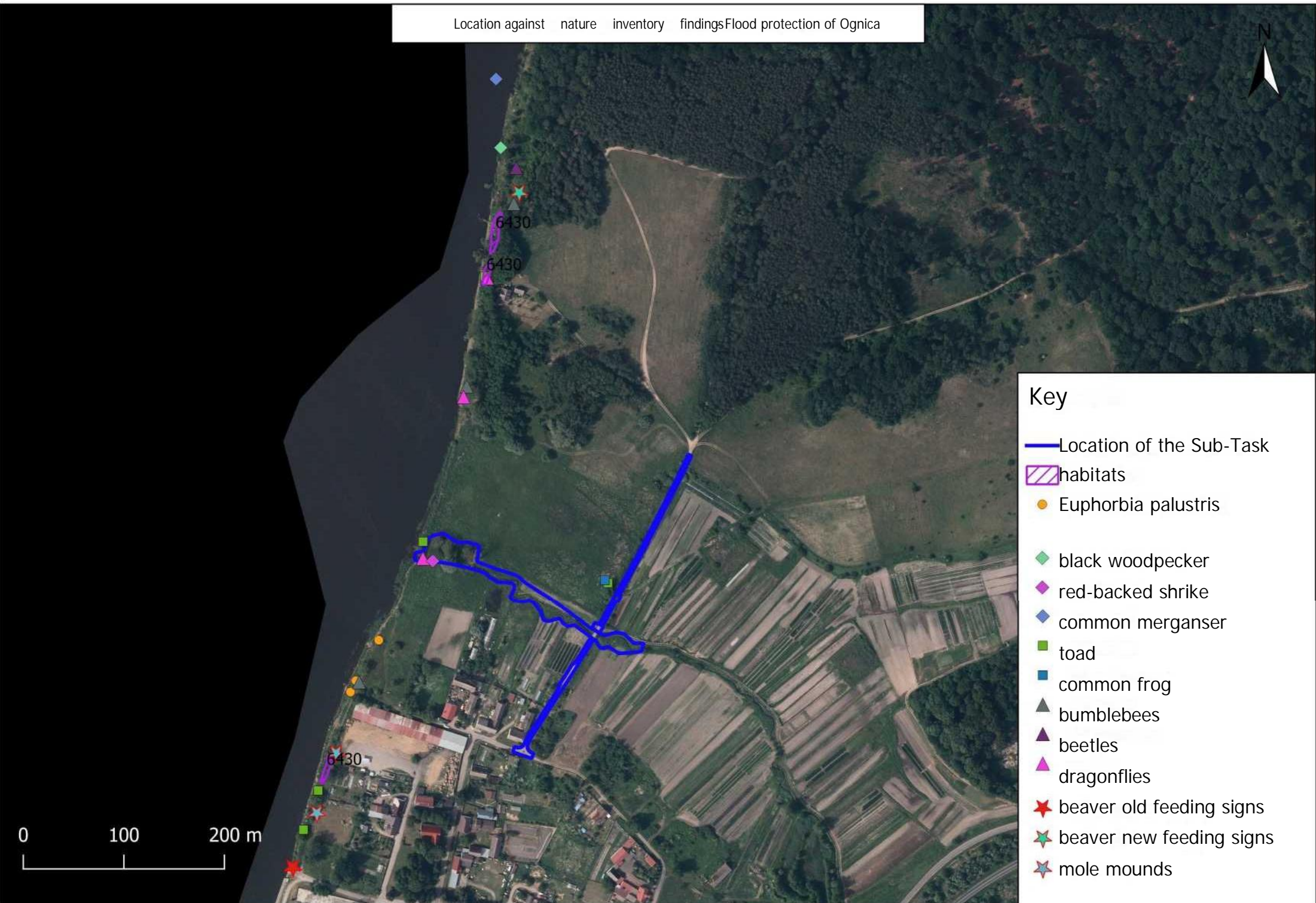
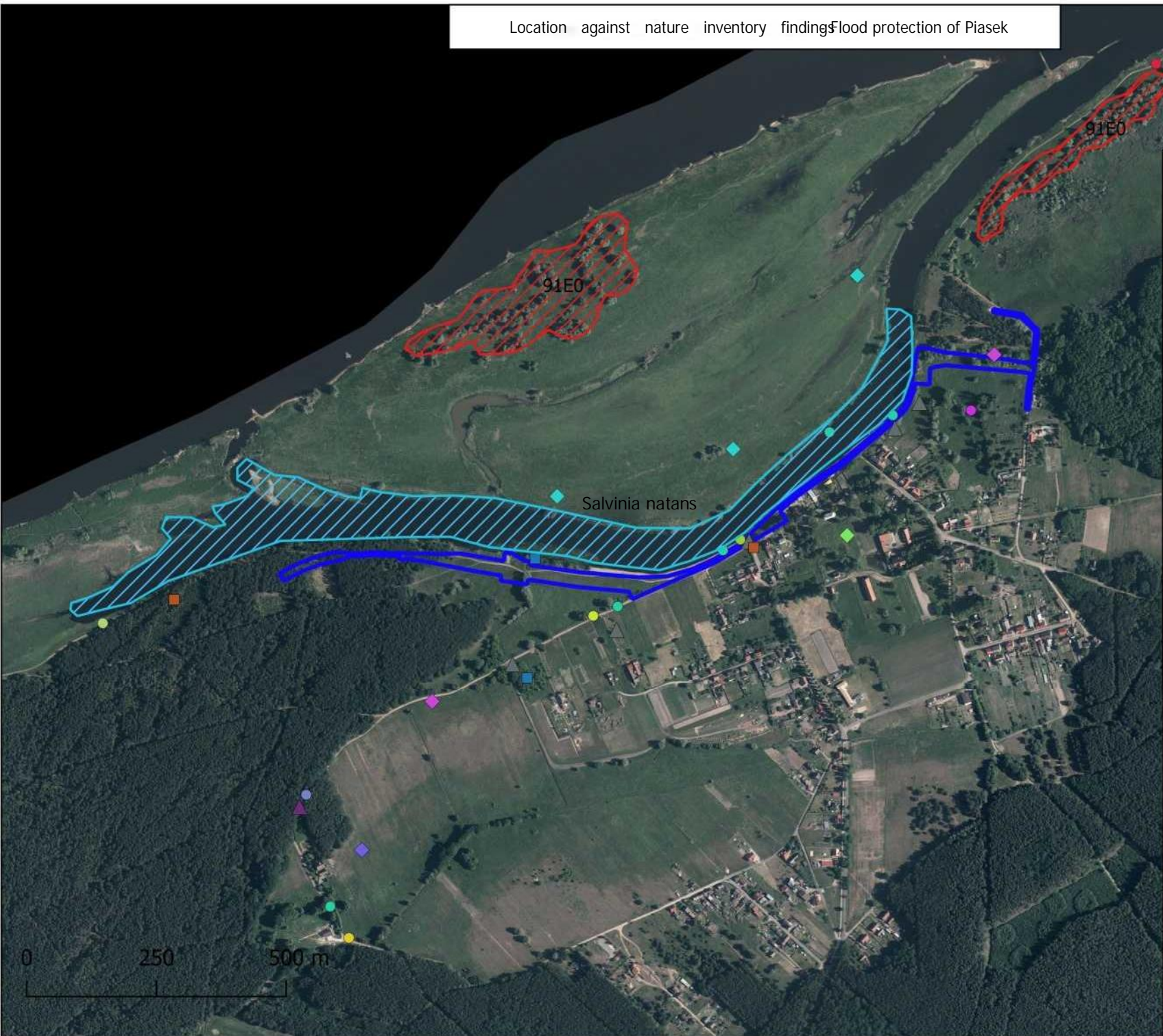




Key

- Location of the Sub-Task
- ▨ habitats
- *Euphorbia palustris*
- ◆ black woodpecker
- ◆ red-backed shrike
- ◆ common merganser
- toad
- common frog
- ▲ bumblebees
- ▲ beetles
- ▲ dragonflies
- ★ beaver old feeding signs
- ★ beaver new feeding signs
- ★ mole mounds

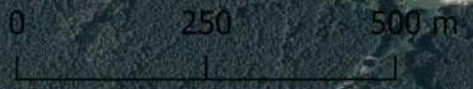




Key

-  Location of the Sub-Task
-  habitats
-  area of plant occurrence
-  *Euphorbia palustris*
-  *Scutellaria hastifolia*

-  beaver old feeding signs
-  beaver new feeding signs
-  hedgehog tracks
-  weasel tracks
-  common shrew
-  red squirrel
-  otter droppings
-  red-backed shrike
-  gadwall
-  woodlark
-  tawny owl
-  reptiles and amphibians
-  toad
-  beetles
-  bumblebees





Key

- Location of the Sub-Task
- Mammals**
- ★ mole
- ★ weasel droppings beaver
- ★ den
- ★ otter droppings
- ▲ bumblebees
- Breeding birds**
- ◆ corncrake
- ◆ common rosefinch
- ◆ red-backed shrike
- Animal sites collected data**
- ★ Marsh harrier
- ★ White stork
- ★ Garganey
- ★ Tufted duck
- ★ Corncrake
- ★ Common moorhen
- ★ Gadwall
- ★ Common snipe
- ★ Common cuckoo
- ★ Curlew
- ★ Great crested grebe
- ★ Shoveller
- ★ Roach
- ★ Barred warbler
- ★ Common kestrel
- ★ Penduline tit
- ★ Black-tailed godwit
- ★ Peregrine falcon
- ★ Great grey shrike
- ★ River warbler
- ★ Common grasshopper warbler
- ★ Aquatic warbler
- ★ Water rail
- ★ Pool frog
- ★ Marsh frog
- ★ Common frog
- ★ Common crane
- Habitats collected data**
- ▨ 3150
- ▨ 6120
- ▨ 91E0

